



**Fibbersley Park  
Academy**

*Being the best you can be.*



24th January 2025

@fibparkacademy

Dear Parents and Carers.

This week has been another fantastic and hardworking one at school! In our OPAL play assemblies, we celebrated the children and classes who have truly embraced their OPAL playtime. We also introduced our exciting new puppet show and encouraged children to share their creative ideas for improving and innovating our play areas. Thank you Miss Burns.

A big thank you to everyone for your generous donations in support of our OPAL project. Your contributions are helping us make playtime even more enjoyable for all our children.

#### **Preparing for Rainy Weather**

Over the next week, the weather is expected to change, with several rainy days ahead. Please



encourage your child to bring wellies or boots to wear at lunchtime for OPAL play. If you need wellies, we do have a few spare pairs available – please contact the school office.

#### **School Council Gardening Club**

Every Friday, an enthusiastic group from our school council has been gardening and helping to prepare and look after our OPAL play areas. If you have any unwanted gardening tools – such as trowels, rakes, or brushes – please bring them to the school office. All donations are greatly appreciated!



#### **Little Wandle Phonics Visit**

This week, we had our Little Wandle phonics visit, and the children demonstrated their positive learning

behaviours and enthusiasm for reading. A big well done to Reception and Key Stage 1! If you have any questions about phonics and Early Reading, please speak to Mrs. Wilson.

#### **Year 2 and Year 6 Highlights**

Year 2 launched their exciting new learning challenge all about Space and the planets this week – an inspiring start to their exploration of the universe!

Meanwhile, Year 6 Class 2 is preparing to lead our family assembly this week – we can't wait to see them shine!

Have a lovely weekend

Mrs K Sugars

Headteacher

### Donations Needed

We are in need of 20 Pallets to build a Mud kitchen for our outdoor play area.

If you could donate any unwanted pallets in a re-usable condition, please contact school office.

Your help and support is very much appreciated.





### **School Meals—IMPORTANT—Please Read**

We encourage you to book your child's school meal via the **Parent Pay** app in advance or the same morning **before 8 AM**. This way you will know what your child is eating at school, and also stay on track with your payments, stay in credit and also save time if you child as come through the office and missed registration. **Please be aware, If you pay for your child's meals when pre-booking, if they are absent from school you will have to cancel the meal for that day/week via Parent Pay or it will still be charged to your account.**

#### **Not sure how to do this?**

If you are in any doubt how to book, (Its easy and more convenient once you know how!) please call the school office and talk to a member of staff who will happily show you how.

**If you have to pay for your Child's school meals please can you ensure your account is kept in credit.**

**Should there be any problems with payments please contact our Finance Assistant Wendy Lewis via main reception.**

### **Absences**

If your child will not be in school, please call the school office *each* morning of their absence to record it. State their name, class number and the reason for absence.

**Please do not send absence messages via class charts.**

**School Time:** Start of the day-main gates open at 8.40am and classroom doors will open at 8,45am. School starts at 8.55am. End of the day– main gates will open at 3.10am. The school day ends at 3,15pm. No-one, including siblings under the age of 16 are allowed to drop off or collect children from school. Thankyou.

**To adhere to our school policy , if your child has sickness or tummy upset, please keep them home for 2 days After the last bout of illness.**

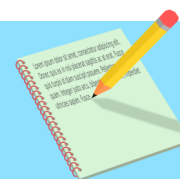
#### **Medications/Inhalers**

Please bring any medications through to the school office. All medications/inhalers need to be in their original box, in date and labelled with the child's name. Medicines purchased from pharmacy require a label printed at pharmacy with the child's name on. A pupil medication form will need to be completed at each new term.



*Being the best you can be.*

## Dates for your Diary



Monday 27th January Year 1—Eye Testing  
Tuesday 28th January Young Voices Final Rehearsal 3.15pm—4.15pm  
Thursday 30th January Young Voices. - Birmingham Resorts Centre -Return (Approx) 10pm  
Friday 31st January Miss Davies/Mr Perry's Class (3 2) **Assembly 9am (parents invited)**  
Uniform Shop 3.15—3.30pm

Friday 7th February Miss Burns Class (4 2) **Assembly 9am (parents invited)**

Friday 7th February Number Day—wear Number Themed clothes/top  
More information to follow on class charts.

Wednesday 12th February **Class 3 3—Dudley Canal Trip**

Thursday 13th February **Class 3 1—Dudley Canal Trip**

Friday 14th February Mrs Rock's Class (R 2) **Assembly 9am (parents invited)**

Friday 14th February **Class 3 2—Dudley Canal Trip**

### **Half Term Break—Monday 17th Feb to Friday 21st Feb.**

**Monday 24th February Spring Term—Return to school**

Friday 28th February Mr Bennion's Class (1 3) **Assembly 9am (parents invited)**

Friday 28th to Wednesday 5th March Book Fair— School Hall

Friday 7th March Miss Jakhu's Class (5 3) **Assembly 9am (Parents invited)**

Friday 14th March Mrs Iqbal's Class (2 3) **Assembly 9am (Parents invited)**

**Friday 21st March** Miss Hubble's Class (6 3) **Assembly (parents invited)**

Friday 28th March Teacher training Day.

Friday 4th April Miss Dolman's Class (4 3) **Assembly 9am (parents invited)**

Thursday 10th April Values assembly EYFS, KS1, KS2 (parents invited)

Friday 11th April Mr Evans Class (R 3) **Assembly 9am (parents invited)**

### **Half Term Break—Monday 14th April—Friday 25th April**

**Monday 28th April Summer Term —Return to School**

Friday 2nd May Miss Dallaway/Mrs Newman 's Class( The Cove) **Assembly 9am (parents Invited)**



## Our Fibbersley Stars for this week.

### Well done to...

<b>R 1</b>	Thierry & Millie	<b>2 2</b>	Jastaj & Layton-Dean	<b>4 3</b>	Milan & Nevaeh
<b>R 2</b>	Delilah & Gauransh	<b>2 3</b>	Michal & Beau	<b>5 1</b>	Piragathish & Evie
<b>R 3</b>	Ariella & Olivia	<b>3 1</b>	Chase & Dastan	<b>5 2</b>	Zion & Teon
<b>1 1</b>	Kirath & Rian	<b>3 2</b>	Alicja & Inara	<b>5 3</b>	Bryan-Kelly & Cody-Jay
<b>1 2</b>	Harvey & Japleen	<b>3 3</b>	Simrat & Isabella	<b>6 1</b>	Jessie-Louise & Kaiden B
<b>1 3</b>	Siena & Evelyn	<b>4 1</b>	Emmanuella & Alan	<b>6 2</b>	Sophie & Evie
<b>2 1</b>	Kavinaya & Harriet	<b>4 2</b>	Taranbir and Roena	<b>6 3</b>	Zander & Halleluyah
<b>Cove 1</b>	Wyatt	<b>Cove 2</b>	Jacob	<b>Nursery</b>	Kali & Asa

### Congratulations to the classes with the highest attendance in each Year Group

**R 1 91%**      **1 2 92%**      **2 1 92%**      **3 1 94%**

**4 3 95%**                      **5 3 94%**                      **6 3 94%**

**Our school target is 93%. Attendance matters!**

**Communication:** If you have an issue or question, please ensure that you follow the school's communication policy and make contact with your **child's class teacher** via Class-charts, telephone or email in the first instance. If you then require additional

# Sassy Sensory Surprises

## Join Us at the Sensory Library

The Sassy Sensory Surprises team invites you to our Sensory Library, offering a variety of SEND resources, including books and sensory materials, to support parents, carers, and families within our community.

Our Sensory Library provides a safe and inclusive space where you can access support materials designed to help you along your SEND journey. We understand that this journey can sometimes feel isolating, with long waiting times for diagnoses and support services. Our aim is to provide accessible information and create a space where SEND families can connect and support one another.

## #BecauseBeingInclusiveMatters

Each month, we send out booking information to our mailing list. If you would like to receive this and attend our rotating monthly Sensory Library sessions, please get in touch.

The Sensory Library changes location monthly but is open to all SEND families

✉ [toni@sassysensorysurprises.co.uk](mailto:toni@sassysensorysurprises.co.uk)

🌐 [www.sassysensorysurprises.co.uk](http://www.sassysensorysurprises.co.uk)

📱 [@sassysensorysurprises](https://www.facebook.com/sassysensorysurprises)



You can Book your place through the Sassy Sensory Facebook Page!