



Being the best you can be.

Dear Parents and Carers,

Thank you to everyone who supported Children In Need last week– we managed to raise nearly £300.

Thank you for your patience this week with the weather and well done to all the children and staff who managed to brave the weather and have come into school everyday. The children have enjoyed playing in the snow, throwing snow balls and making snowman.



Siblings and family photographs were taken in school on Thursday . Please contact the school office if your

children missed the photographer– there maybe an opportunity later in the school year to have their photographs

taken.

School productions:

Throughout December there will be a number of school Christmas productions and concerts. Please use the dates for your diary section on the newsletter to know what is happening in school. Year leads and class teachers will use class charts to share information and keep you up to date with what is happening.

Have a lovely weekend.

Mrs Sugars





School Meals—IMPORTANT—Please Read

We encourage you to book your child's school meal via the **Parent Pay** app in advance or the same morning **before 8 AM**. This way you will know what your child is eating at school, and also stay on track with your payments, stay in credit and also save time if you child as come through the office and missed registration. **Please be aware, If you pay for your child's meals when pre-booking, if they are absent from school you will have to cancel the meal for that day/week via Parent Pay or it will still be charged to your account.**

Not sure how to do this?

If you are in any doubt how to book, (Its easy and more convenient once you know how!) please call the school office and talk to a member of staff who will happily show you how.

If you have to pay for your Child's school meals please can you ensure your account is kept in credit.

Should there be any problems with payments please contact our Finance Assistant Wendy Lewis via main reception.

Absences

If your child will not be in school, please call the school office *each* morning of their absence to record it. State their name, class number and the reason for absence.

Please do not send absence message via class charts.

School Time: Start of the day-main gates open at 8.40am and classroom doors will open at 8,45am. School starts at 8.55am. End of the day– main gates will open at 3.10am. The school day ends at 3,15pm. No-one, including siblings under the age of 16 are allowed to drop off or collect children from school. Thankyou.

To adhere to our school policy , if your child has sickness or tummy upset, please keep them home for 2 days After the last bout of illness.

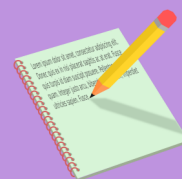
Medications/Inhalers

Please bring any medications through to the school office. All medications/inhalers need to be in their original box, in date and labelled with the child's name. Medicines purchased from pharmacy require a label printed at pharmacy with the child's name on. A pupil medication form will need to be completed at each new term.



Dates for your Diary.

Friday 29th November	Mrs Passmore's Class (R 1) Assembly 9am (parents invited)
Tuesday 3rd December	Christmas Guitar Concert 10-10.30am
Wednesday 4th December	Year 6 Residential to Culmington Manor
Friday 6th December	Year 5—Space Centre Trip
Friday 6th December	Miss Parry's Class (2 2) Assembly 9am. (parents invited)
Monday 9th December	KS1 Nativity 2.00– 3.00pm
Tuesday 10th December	KS1 Nativity—9.15—10.15am
Wednesday 11th December	Reception Nativity—2.30—3.00pm
Thursday 12th December	Reception Nativity 9.00 --9.30am
Thursday 12th December	Nursery AM Christmas Concert 11.00—11.30am Nursery PM Christmas Concert 2.00—2.30pm
Friday 13th December	Reception—Trip to WILD Zoological Park
Friday 13th December	Mrs Dawson /Miss Aldridge's Class (5 1) Assembly 9am (parents invited)
Monday 16th December	KS1 - PFA Meet Santa 3.30-4pm/4.15-4.45pm /5.00—5.30pm
Tuesday 17th December	KS2 Christmas Sing-Along 2.00-3pm
Wednesday 18th December	KS2 Christmas Sing-Along 9.15-10.15am
Thursday 19th December	Values Assembly 9.00—10.30am
Friday 20th December	Christmas Breakfast.
Friday 20th December	(School closes at 12pm) End of Term.
Monday 6th January 2025	Spring Term 2025— this is a teacher training day.
Tuesday 7th January 2025	Term starts— children return to school
Friday 17th January	Mr Hancocks's Class (1 2) Assembly 9am (parents invited)
Friday 24th January	Miss O'Regan's Class (6 2) Assembly 9am (parents invited)
Thursday 30th January 2025	Young Voices. - Birmingham Resorts Centre -Return (Approx) 10pm
Friday 31st January	Miss Davies/Mr Perry's Class (3 2) Assembly 9am (parents invited)
Friday 7th February	Miss Burns Class (4 2) Assembly 9am (parents invited)
Friday 14th February	Mrs Rock's Class (R 2) Assembly 9am (parents invited)
Friday 28th February	Mr Bennion's Class (1 3) Assembly 9am (parents invited)





Being the best you can be.

Our Fibbersley Stars for this week.

Well done to...

R1	Thierry & Haneen	22	Layton-Dean & Essa	43	Gracie & Ocean
R2	Seerat & Harley	23	Reuban & Deni	51	Felix & Adeya
R3	Nimrit & Fateh	31	Ethan & Lily S	52	
11	Amelia & Hugo	32	Aleezah & Aadi	53	Jan & Rosie
12		33	Omowasola & Mollie-Jai	61	Malachy & Yuvraj
13	Sienna & Amberjot	41	Whole Class	62	Arielle & Sienna
21		42	Eshan & Noah	63	Paige & Cecee
Cove 1	Wyatt	Cove 2	Emily	Nur sery	Harper & Rocco

Congratulations to the classes with the highest attendance in each Year Group.

R 1 1 2 2 1 3 1

4 3 5 3 6 3

Our school target is 93%. Attendance matters!

Communication: If you have an issue or question, please ensure that you follow the school's communication policy and make contact with your child's class teacher via Class-charts, telephone or email in the first instance. If you then require additional support, please ask to speak to the **Year Leader**, then a member of SLT.



PFA Corner

NEW PFA MEMBERS

Thank you to everyone who has come forward so far and shown an interest in joining us on the PFA. It is very much appreciated and hopefully we'll get more new recruits in the next couple of months. If you would like more information about joining us, then please leave your details with the office or email us at pfa@fibbersleyparkacademy.org.uk.

THANK YOU!

A big thank you to everyone that donated surplus Halloween treats and unwanted Christmas decorations. We are very grateful for all of your support. Santa is looking forward to his newly decorated grotto!

CHRISTMAS RAFFLE

We are currently planning our Christmas raffle extravaganza and already we have some great prizes up for grabs! We are still interested in donations for this raffle, so if either yourselves, family members or businesses that you know of are able to donate, this would be of an enormous help to us. This could be a physical prize, but also meal vouchers, salon treatments etc. depending on the individual businesses.

AND FINALLY . . .

Sorry to mention Christmas again! But, Santa will soon be here, so keep your eyes peeled and your ears open for grotto ticket information for KS1. There will also be some special Golden Tickets up for grabs!





**Fibbersley Park
Academy**

Being the best you can be.

22nd November 2024

@fibparkacademy

Primary Admissions Drop-In Sessions

We are pleased to inform you that we will be hosting drop-in sessions at various locations throughout Walsall to assist parents and carers in completing their online Reception 2025 applications.

We have the following sessions available;

Location: **Willenhall Library**

Date: Tuesday, 3 December 2024

Time: 9:30am - 12:30pm

Address: 1 Walsall St, Willenhall, WV13 2EX

Location: **Darlaston Library**

Date: Tuesday, 3 December 2024

Time: 1pm - 4pm

Address: 1 King Street, Darlaston WS10 8DE

Location: **Lichfield Street Hub**

Date: Wednesday, 4 December 2024

Time: 9am - 5pm

Address: Lichfield St, Walsall, WS1 1TR

Location: **Blakenall Village Centre**

Date: Thursday, 5 December 2024

Time: 1pm - 4pm





Fibbersley Park
Academy



22nd November 2024

@fibparkacademy

Being the best you can be.



St Stephen's Church
Presents

Christmas Fair

- Many Stalls (incl. White Elephant)
- Games & Great Prizes!
- Free Kid's Christmas Crafts
- Hot Food ● Raffle
- Delicious cakes

FUN FOR THE WHOLE FAMILY!

**30th
NOVEMBER**

12-2PM

Made with PosterMyWall.com
AT: ST STEPHEN'S CHURCH, WOLVERHAMPTON STREET, WILLENHALL WV13 2PS